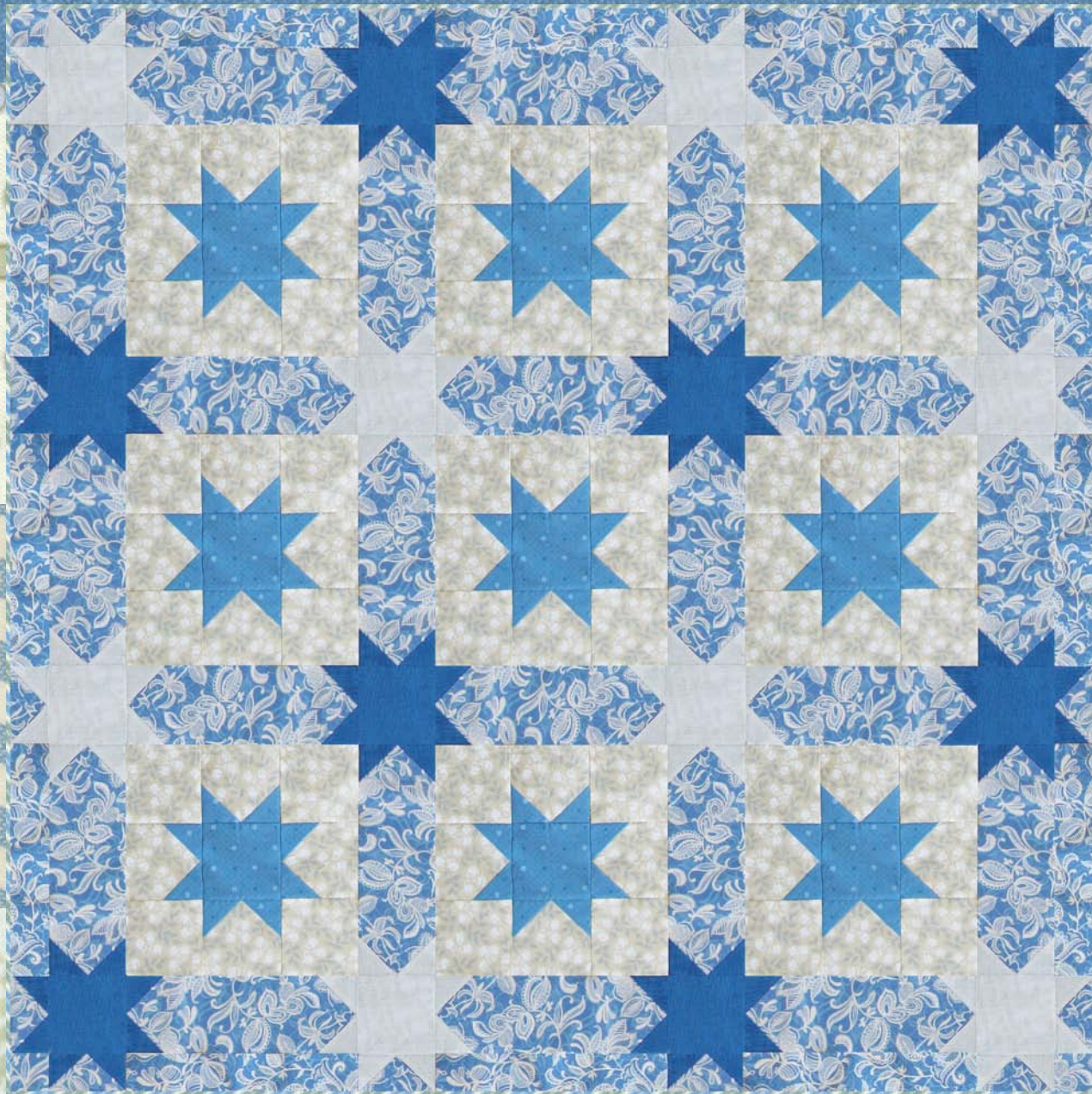


*Introducing Andover Fabrics new collection:
French Farmhouse fabrics by Renée Nanneman*

French Farmhouse



French Farmhouse fabrics
by Renée Nanneman
Quilt designed and made
by Laurie Bevan
Machine quilted by Ann Jones
Finished size: 56-1/2" x 56-1/2"

*Andover
Fabrics™*

makower uk®
1384 Broadway • New York, NY 10018 • (800) 223-5678
www.andoverfabrics.com
- Free Pattern Download Available -

French Farmhouse

*Introducing Andover Fabrics new collection: French Farmhouse by Renée Nanneman
Quilt designed and made by Laurie Bevan and machine quilted by Ann Jones*

Quilt finishes approx. 56-1/2" x 56-1/2"
9 Star Blocks 12" x 12" with star sashing 4" wide

Planning Information

Laurie chose to bind her quilt with bias-cut binding. If you wish to do likewise, you will need a total of 240" of 2-1/2"-wide binding. If you prefer to use straight-grain (usual) binding, you will need to cut (6) 2-1/2" x width of fabric strips. Yardage given is sufficient for either type of binding.

Fabric Requirements & Cutting Directions

3816-B 3/4 yard Medium blue geometric print (Star Blocks)

Cut (72) 2-1/2" squares

Cut (9) 4-1/2" squares

3815-B 1-3/8 yards Beige floral print (Star Block background)

Cut (72) 4-1/2" squares

3818-W 5/8 yard Tiny beige check (star sashing)

Cut (64) 2-1/2" squares

Cut (8) 4-1/2" squares

3814-B 1-5/8 yards* Blue/cream lace floral (star sashing and outer border)

Cut (24) 4-1/2" x 12-1/2" strips

Cut (16) 2-1/2" x 4-1/2" rectangles

Cut (12) 2-1/2" x 12-1/2" strips

Cut (4) 2-1/2" squares

3818-B 5/8 yard Tiny blue check (star sashing)

Cut (64) 2-1/2" squares

Cut (8) 4-1/2" squares

**Additional yardage needed for backing (see below).*

3814-B 3-3/4 yards Blue/cream lace floral (backing)

Cut and piece widthwise to fit quilt top, with 4" overlap on all sides.

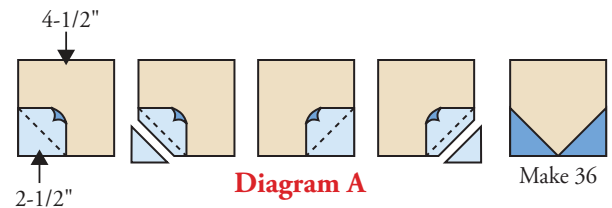
3819-B 7/8 yard Blue/gray lacy stripe (binding)

For cutting information, see Planning.

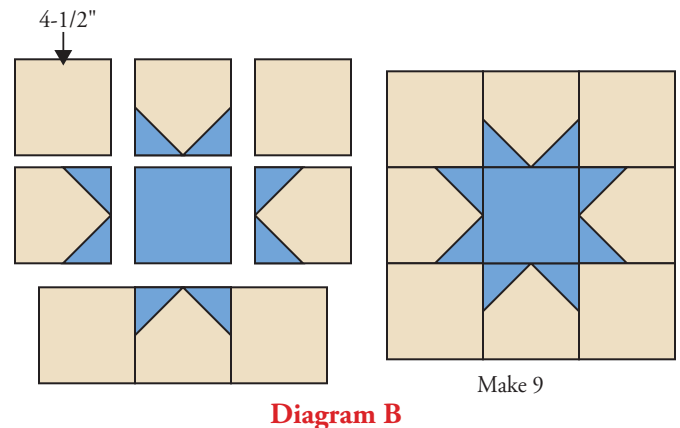
French Farmhouse

Piecing the Star Blocks and Sashing

1. Referring to Diagram A, draw diagonal line on wrong side of medium blue geometric print $2\frac{1}{2}$ " square. Place marked square on beige floral print $4\frac{1}{2}$ " square, right sides together, raw edges aligned. Stitch on drawn line and trim. Press open. Repeat on adjacent corner to make pieced square. Make 36.



2. Arrange and sew 3 rows using 4 beige floral $4\frac{1}{2}$ " squares, 4 pieced squares, and 1 medium blue $4\frac{1}{2}$ " square (Diagram B). Stitch rows together to make Star Block. Make 9.

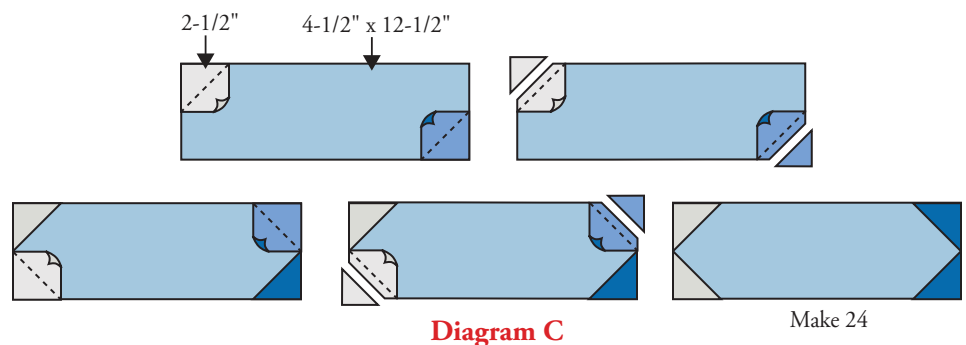


3. Referring closely to Diagram C and using same technique as in Step 1, sew 2 beige check and 2 blue check $2\frac{1}{2}$ " squares to ends of blue/cream lacy floral $4\frac{1}{2}$ " x $12\frac{1}{2}$ " strip to make pieced sashing strip. Make 24.

4. In same manner, and referring to Diagram D, make 8 lacy floral/blue check flying geese and 8 lacy floral/beige check flying geese.

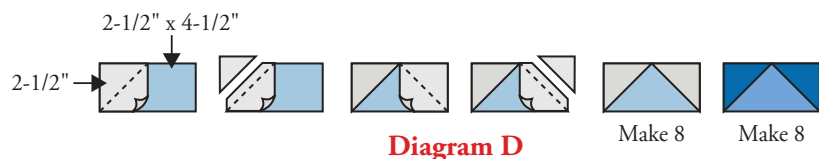
Assembling the Quilt

5. Refer to Quilt Diagram and watch orientation throughout assembly. Stitch 4 sashing rows using 2 beige check $4\frac{1}{2}$ " squares, 2 blue check $4\frac{1}{2}$ " squares, and 3 sashing strips each. Sew 3 block rows using 4 sashing strips and 3 Star Blocks each.



6. Sew rows together, alternating.

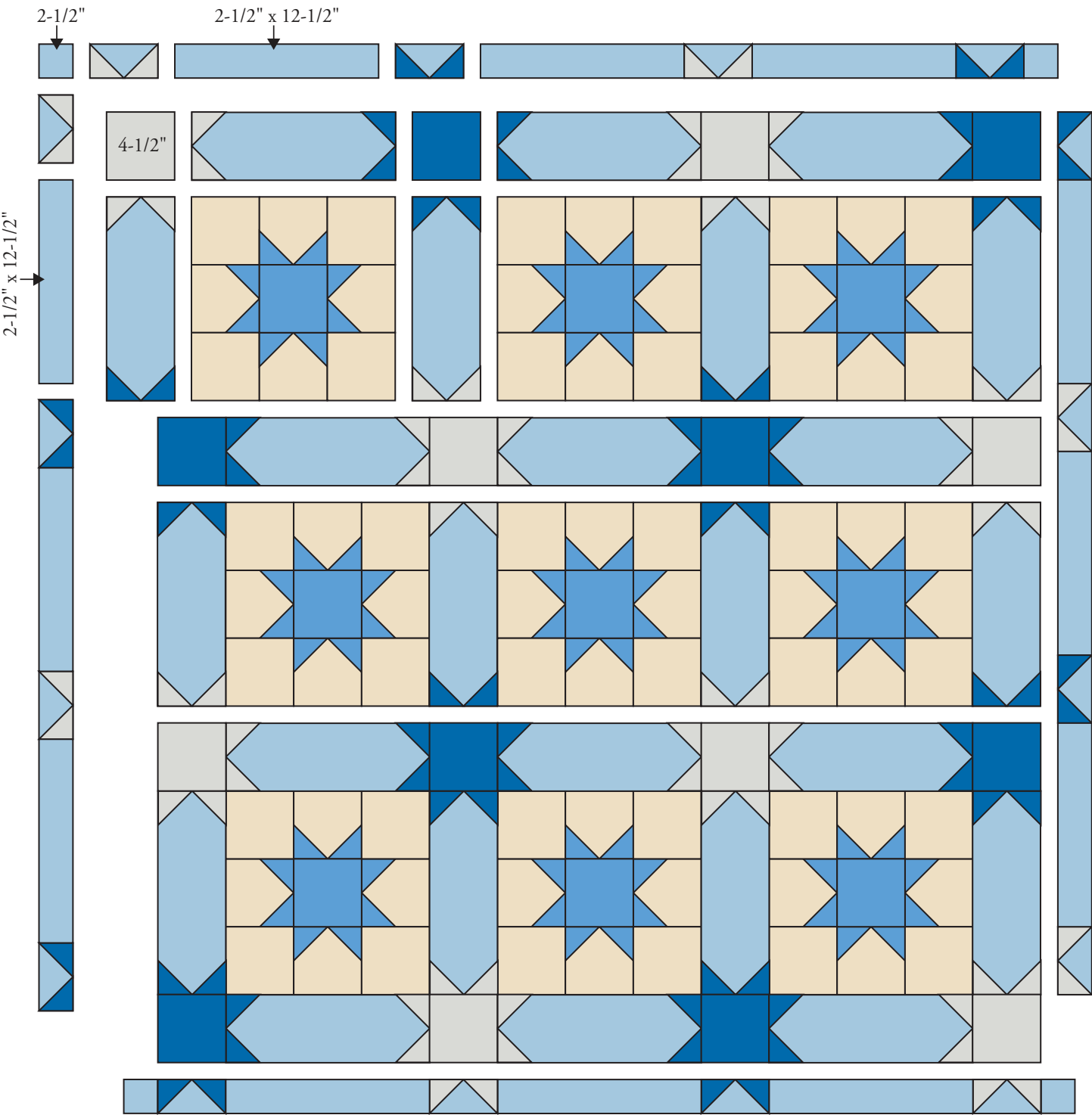
7. Make side border by sewing together 2 beige check flying geese, 2 blue check flying geese and 3 lacy floral $2\frac{1}{2}$ " x $12\frac{1}{2}$ " strips. Make 2. Watching orientation, sew to sides of quilt. Stitch together 2 lacy floral $2\frac{1}{2}$ " squares, 2 of each flying geese arrangement, and 3 lacy floral $2\frac{1}{2}$ " x $12\frac{1}{2}$ " strips to make top/bottom border. Make 2. Stitch to top and bottom of quilt.



Finishing the Quilt

8. Layer quilt with batting and 3814-B blue/cream lace floral backing. Quilt as desired. Referring to Planning, bind with 3819-B blue/gray lacy stripe to finish the quilt.

French Farmhouse



Quilt Diagram

French Farmhouse

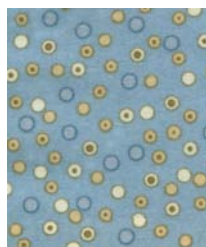
by Renée Nanneman



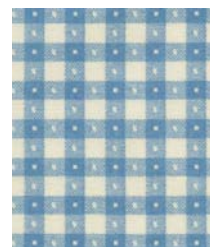
3814-B*



3815-B*



3817-B



3820-B



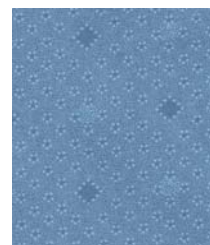
3818-W*



3818-B*



3819-B*



3816-B*



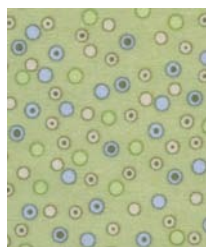
WV3823-B



3814-G



3815-G



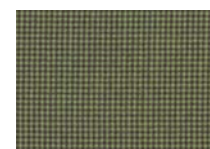
3817-G



3820-G



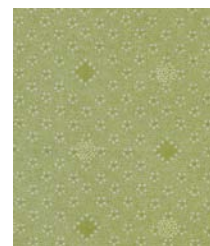
3818-G



3818-GN



3819-G



3816-G



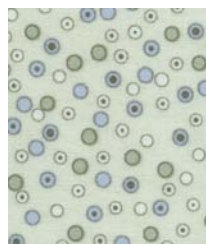
WV3823-G



3814-L



3815-L



3817-L



3820-L



3818-L



3818-N



3819-L



3816-L



WV3823-L